

Social landscapes: capturing linguistic variability across the Lifespan of bilinguals

CABRERA PÉREZ, R.¹; NAVARRO, E.²; CAÑARTE, D.; ROSSI, E.¹

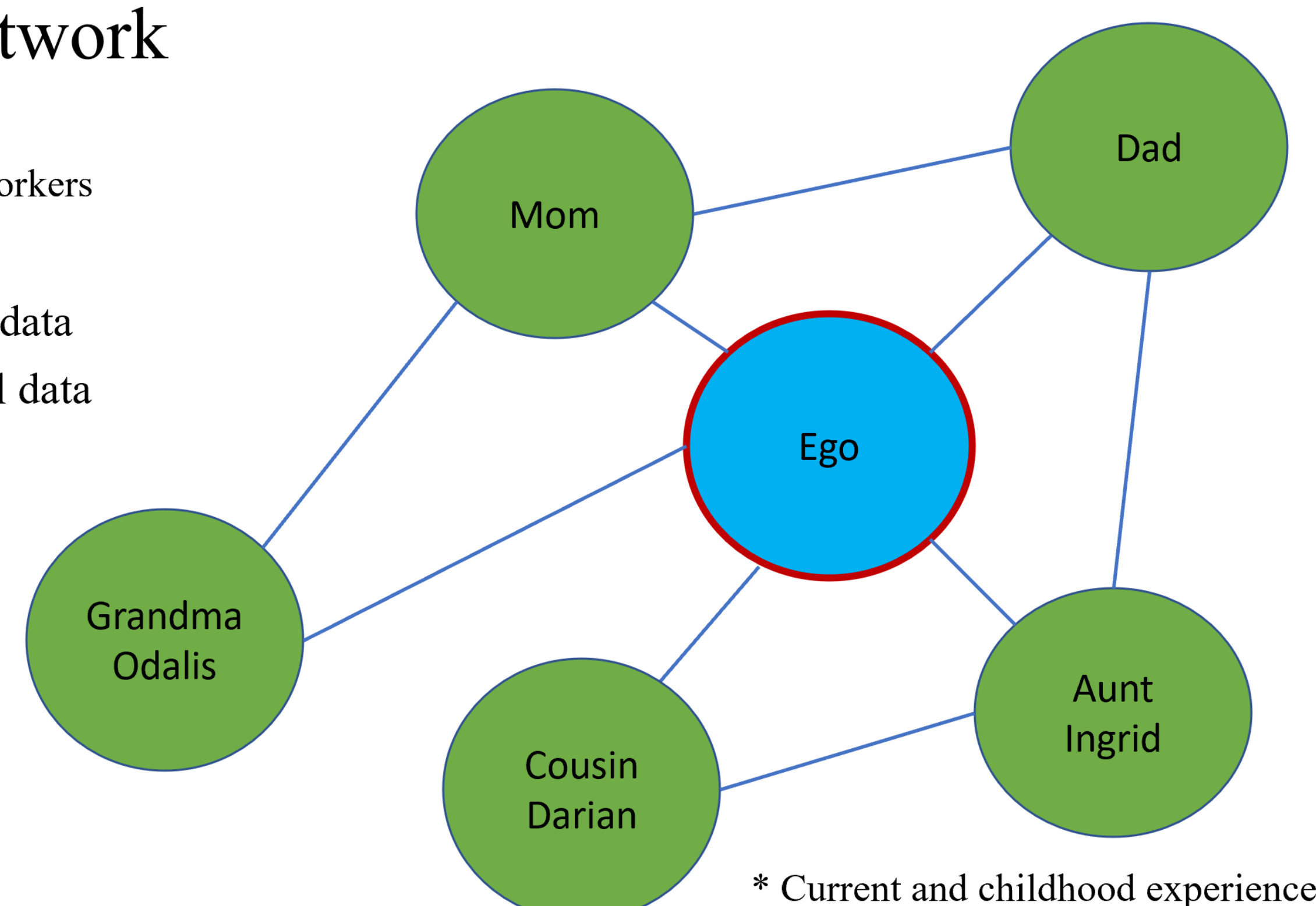
1. UNIVERSITY OF FLORIDA, 2. TUFTS UNIVERSITY

INTRODUCTION

Social Network Analysis investigates the relationships that individuals have with other people in their lives. Recent research has attempted to describe the variability of the bilingual experience through measures of language entropy (Gullifer & Titone, 2020; Tiv et al., 2020) to characterize individual differences in bi/multilinguals, and their multifaceted social use.

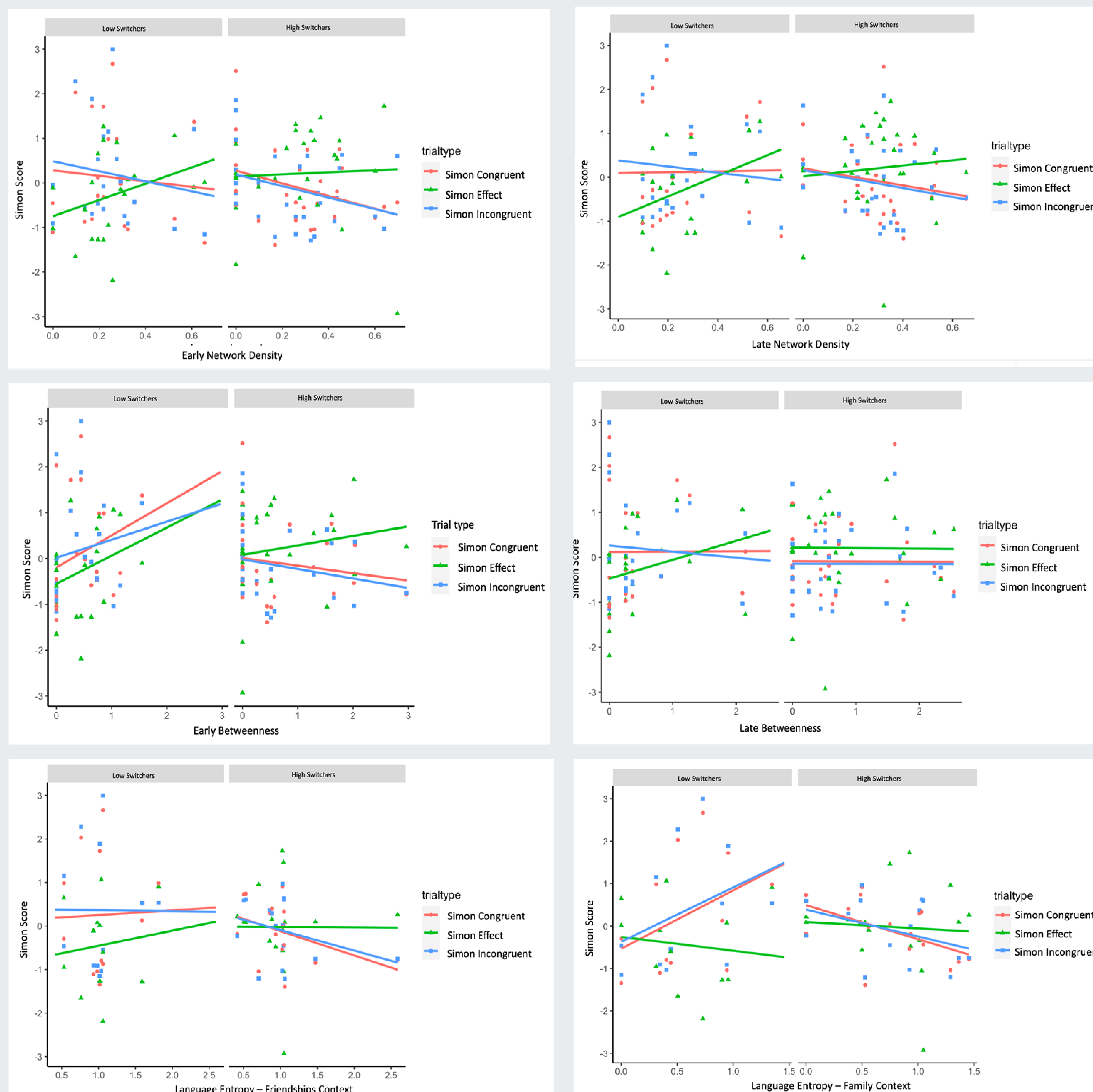
Social Network

5 family members
5 friends
5 classmates/co-workers
Ego level data
Ego-Alter level data
Alter-Alter level data



N=52 Spanish/English bilinguals who learned both languages before the age of 7.

RESULTS (SIMON TASK)



NETWORK
DENSITY

BETWEENNESS

LANGUAGE
ENTROPY